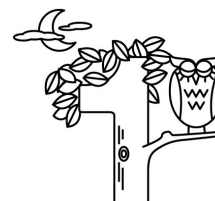


CALCOLIAMO VELOCEMENTE

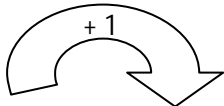
Per aggiungere 1 basta aumentare di 1 le unita'.

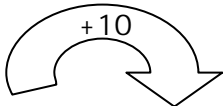
Per aggiungere 10 basta aumentare di 1 le decine.

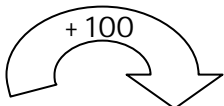
Per aggiungere 100 basta aumentare di 1 le centinaia



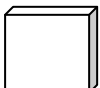
Completa le tabelle senza calcolare, ma ricordandoti i "trucchetti".

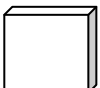
	
15	
27	
36	
87	
46	
18	
55	
20	
94	
27	
68	

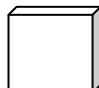
	
38	
24	
76	
87	
83	
57	
10	
25	
22	
64	
59	

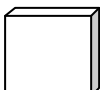
	
173	
256	
876	
361	
837	
111	
561	
825	
269	
442	
378	

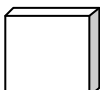
Inserisci nelle scatole l'operazione che ha trasformato il primo numero nel secondo.

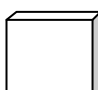
38  48

237  247

57  58

149  249

871  872

384  394