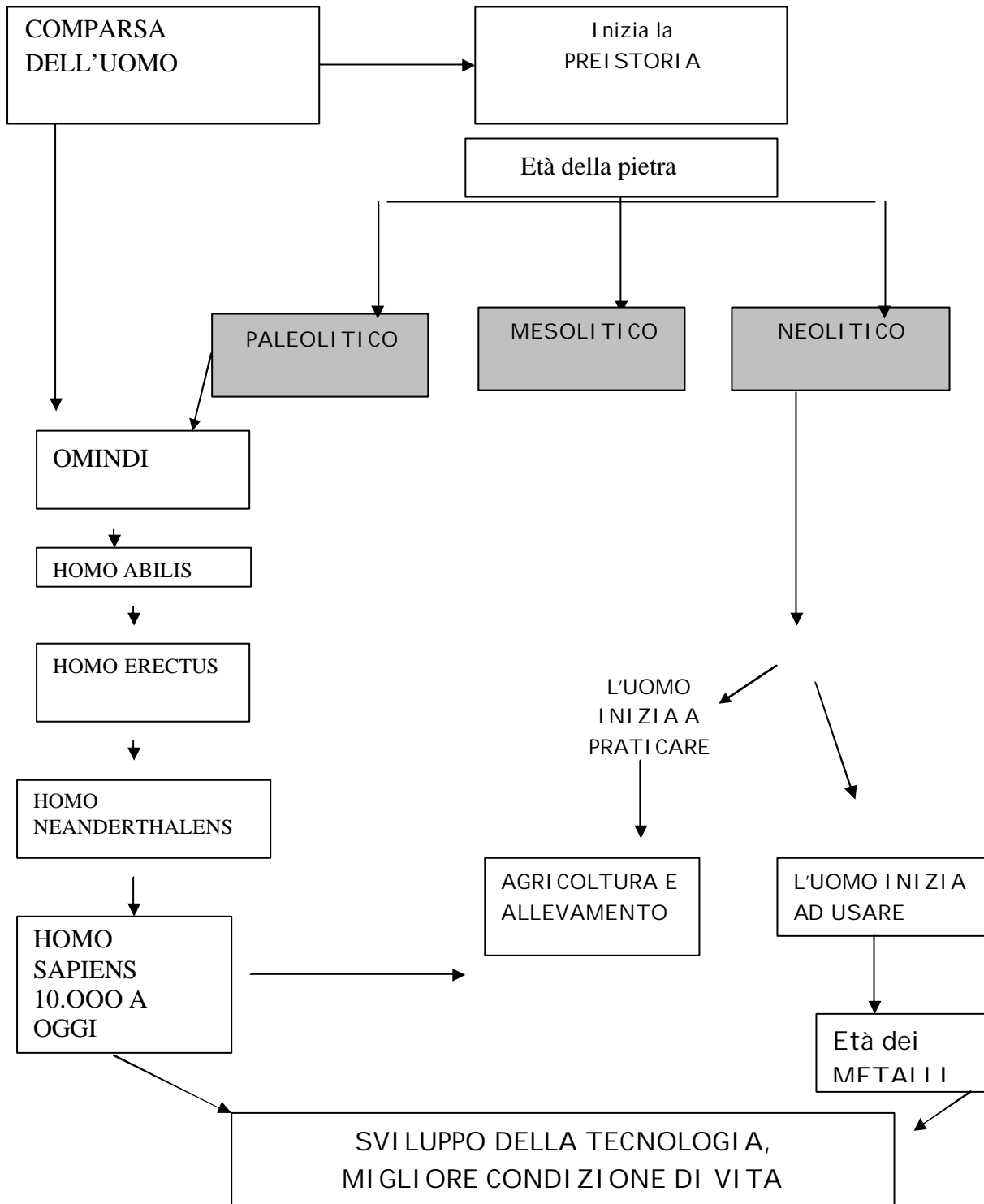




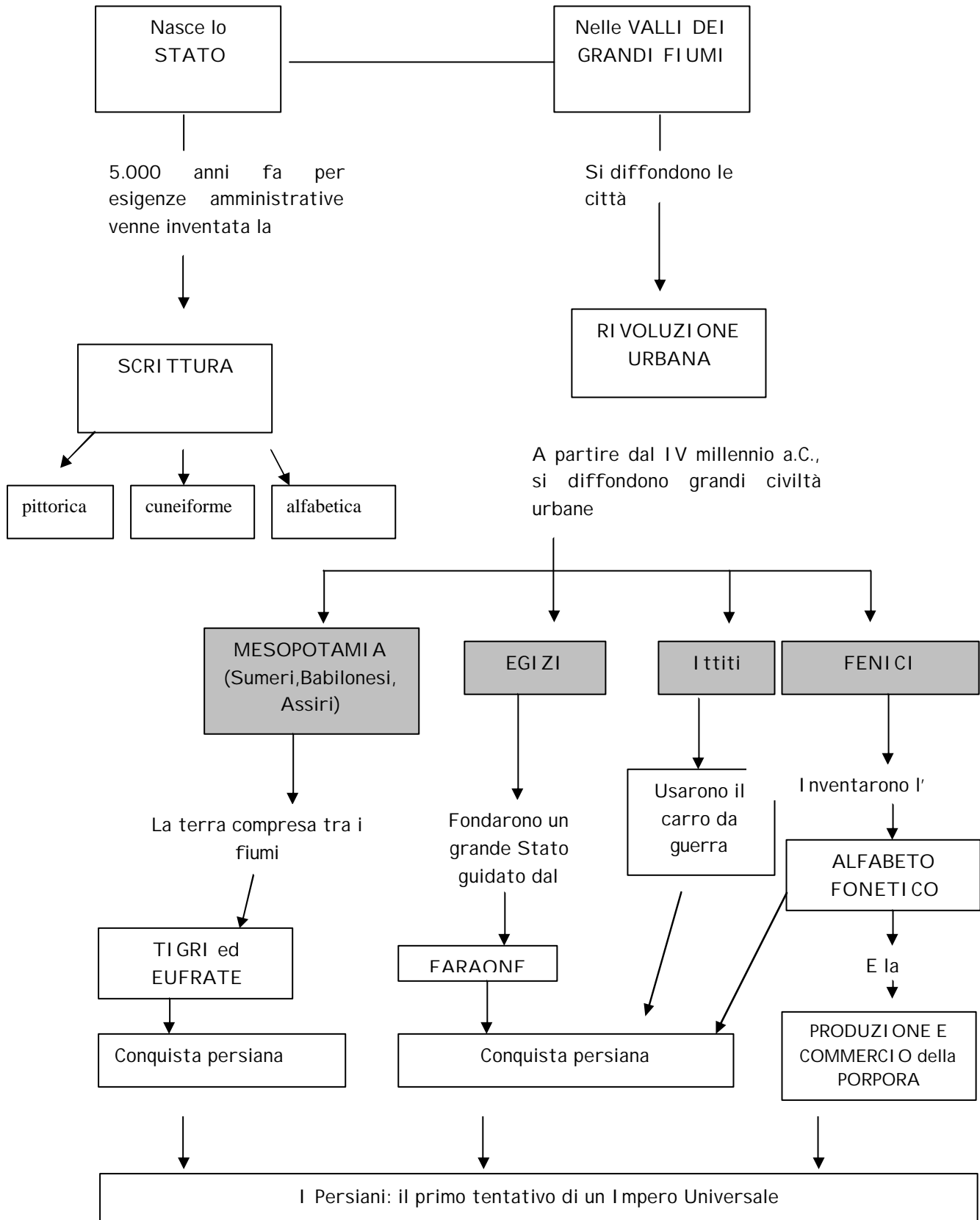
## MODULO I - LA PREISTORIA

2.500.000 ANNI FA





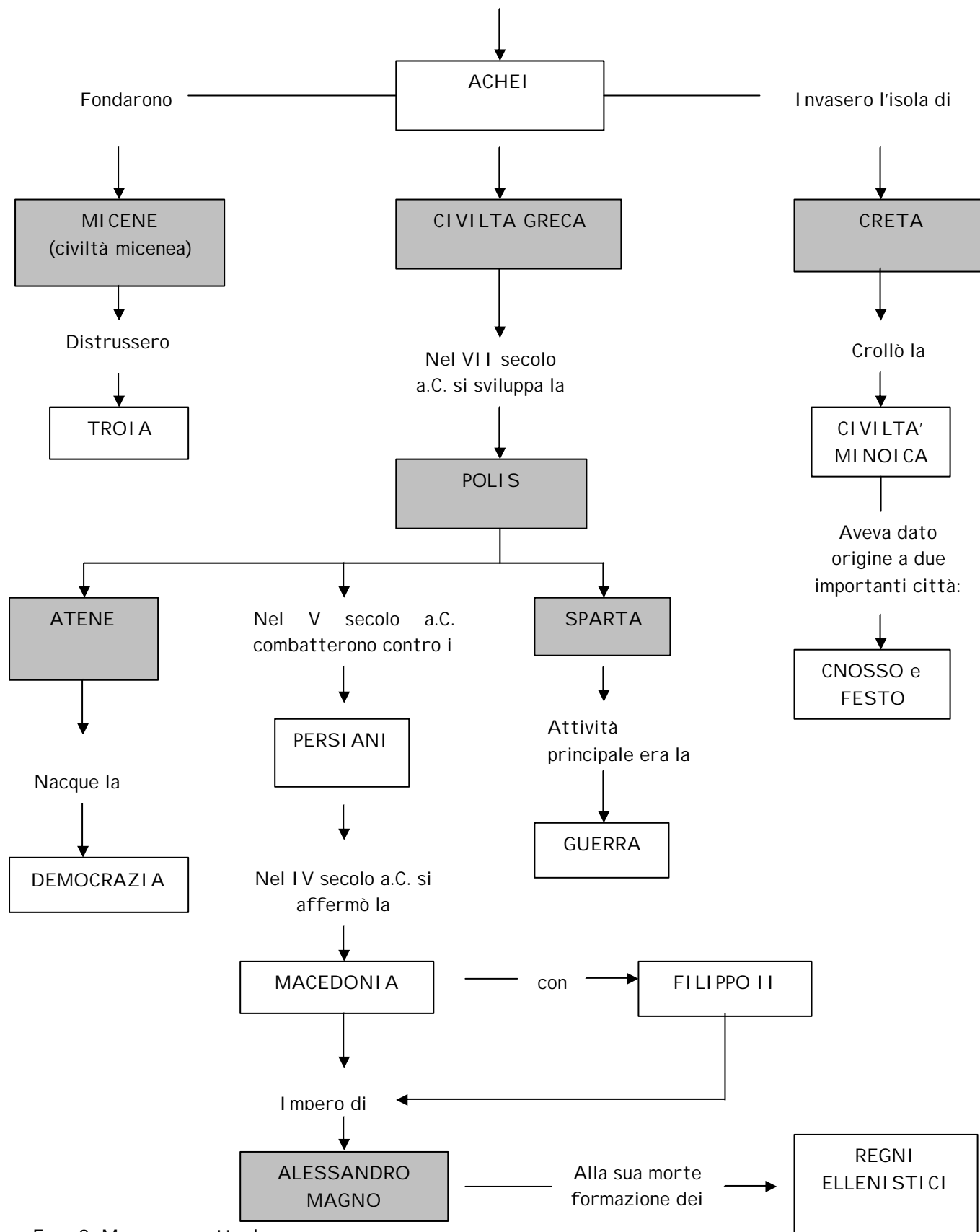
## MODULO II - LE PRIME GRANDI CIVILTÀ





## MODULO III - LA CIVILTÀ GRECA

Attorno al 2.000 a.C. la Grecia venne invasa dagli

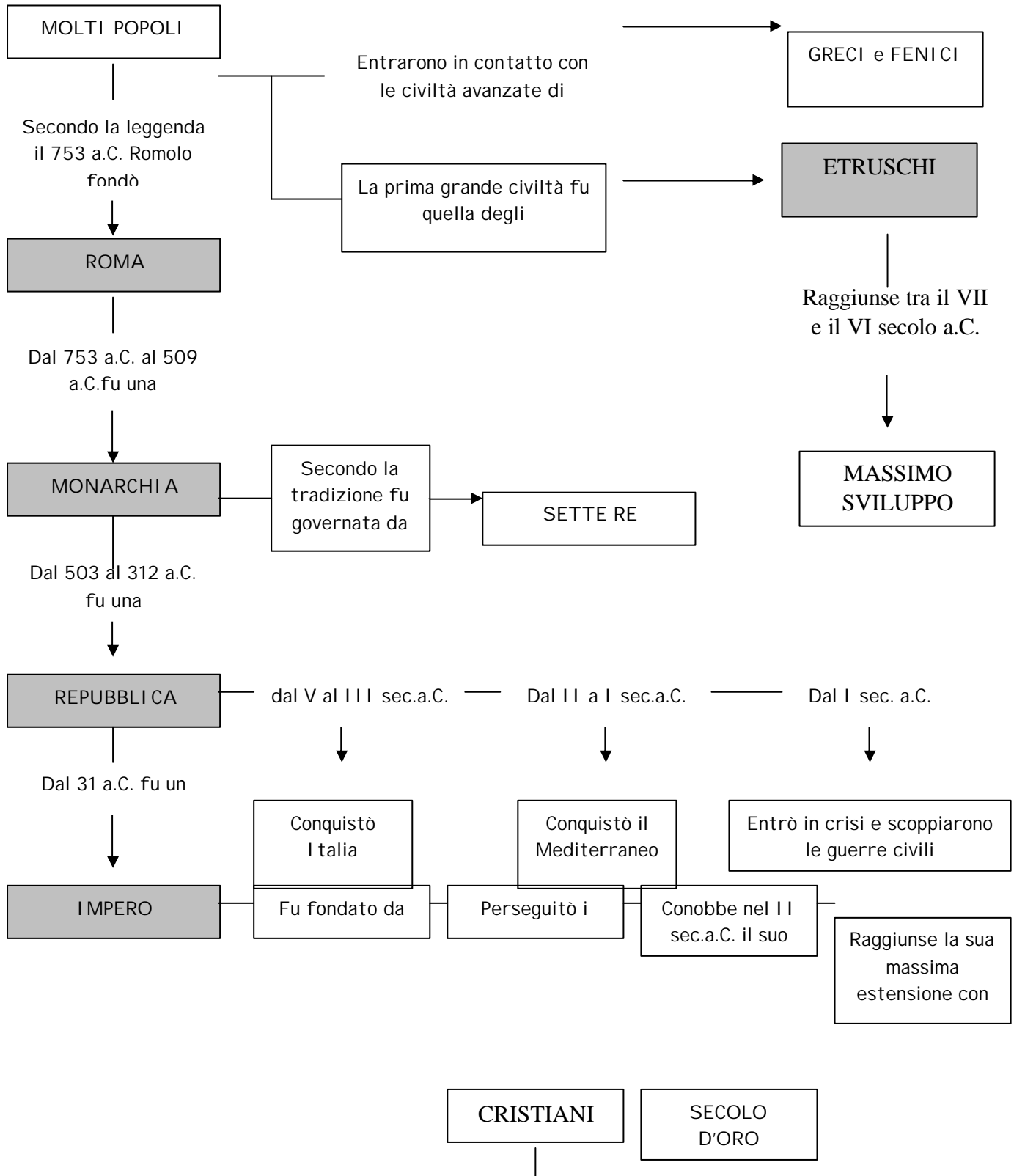


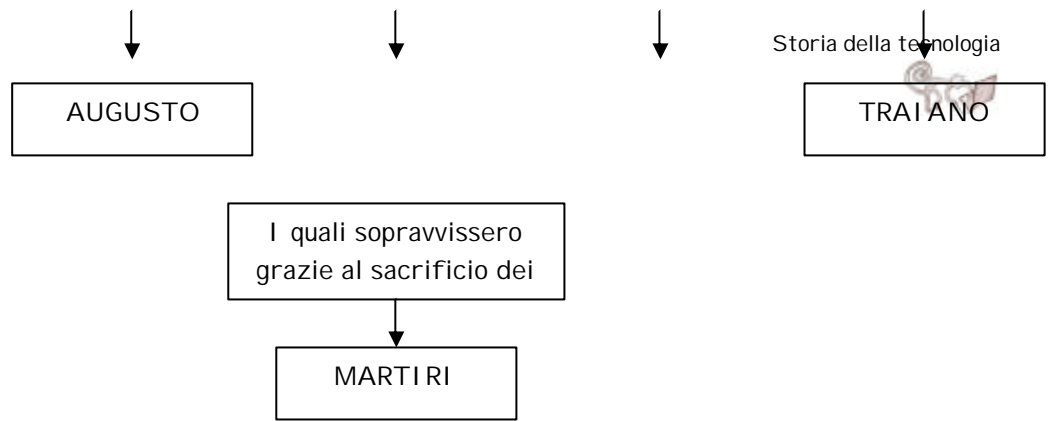
Fase 3. Mappa concettuale



## MODULO IV - DAGLI ETRUSCHI AI ROMANI

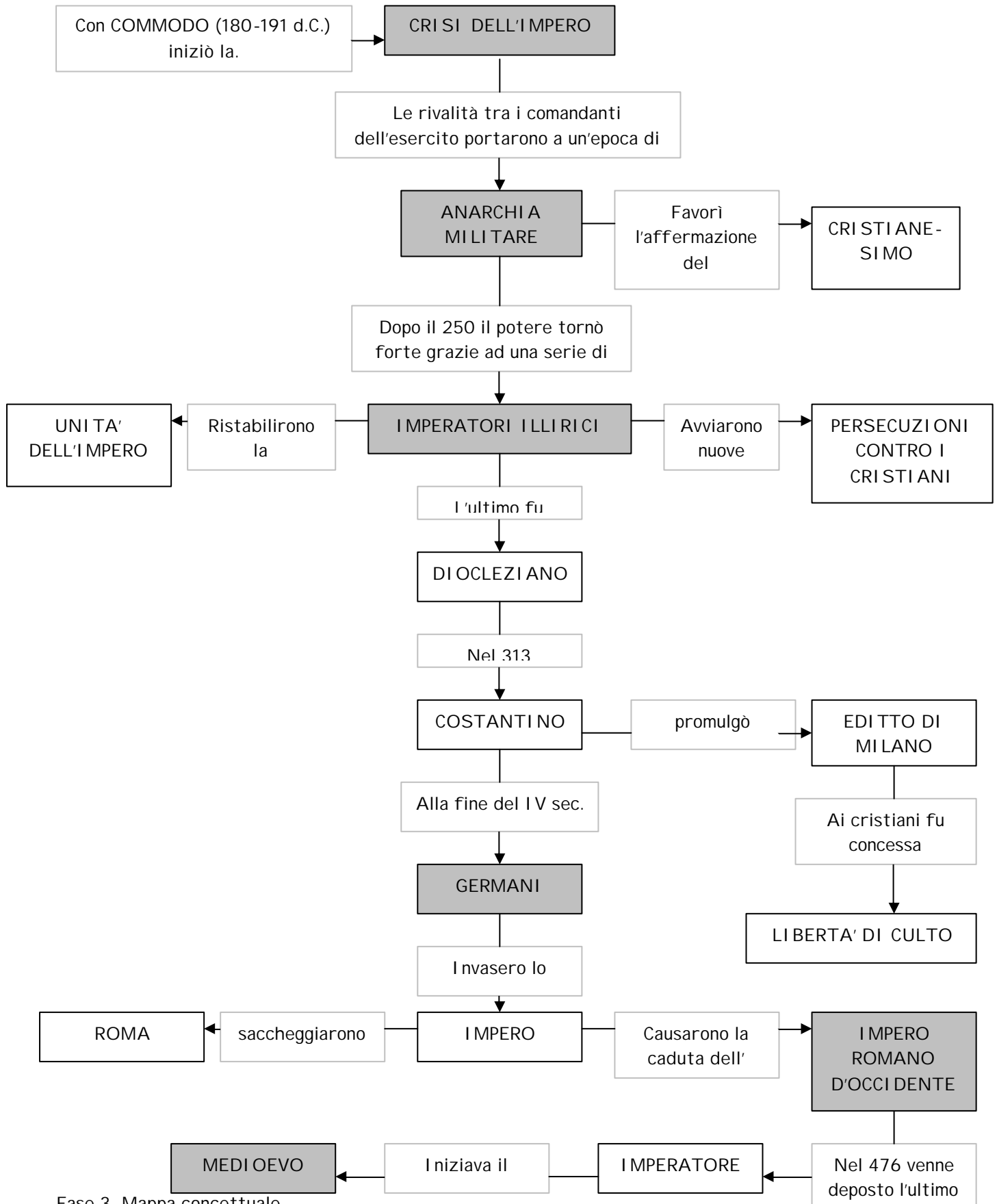
Fin dalla preistoria  
l'Italia era abitata da





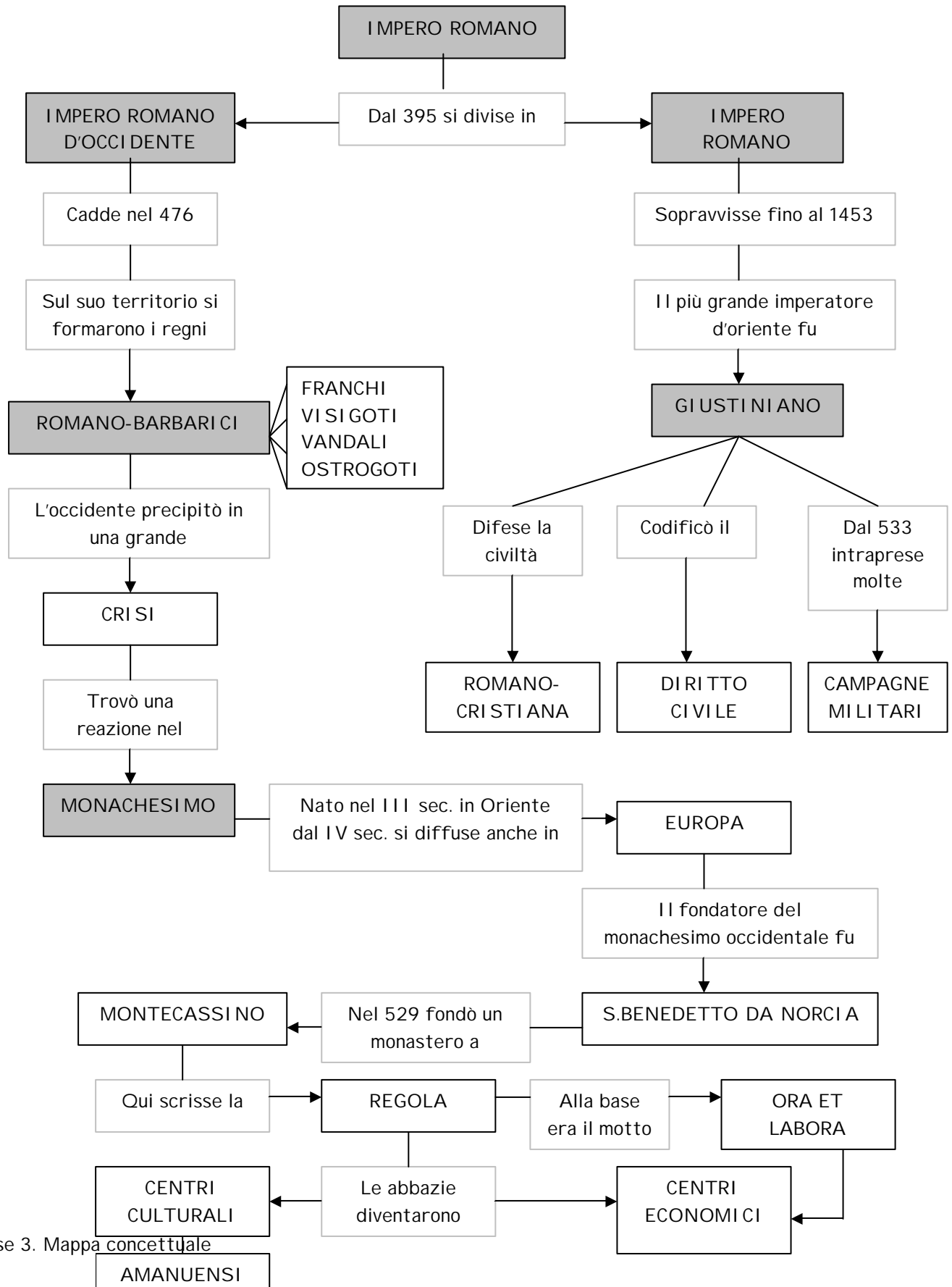


## GLI ULTIMI SECOLI DELL'IMPERO ROMANO





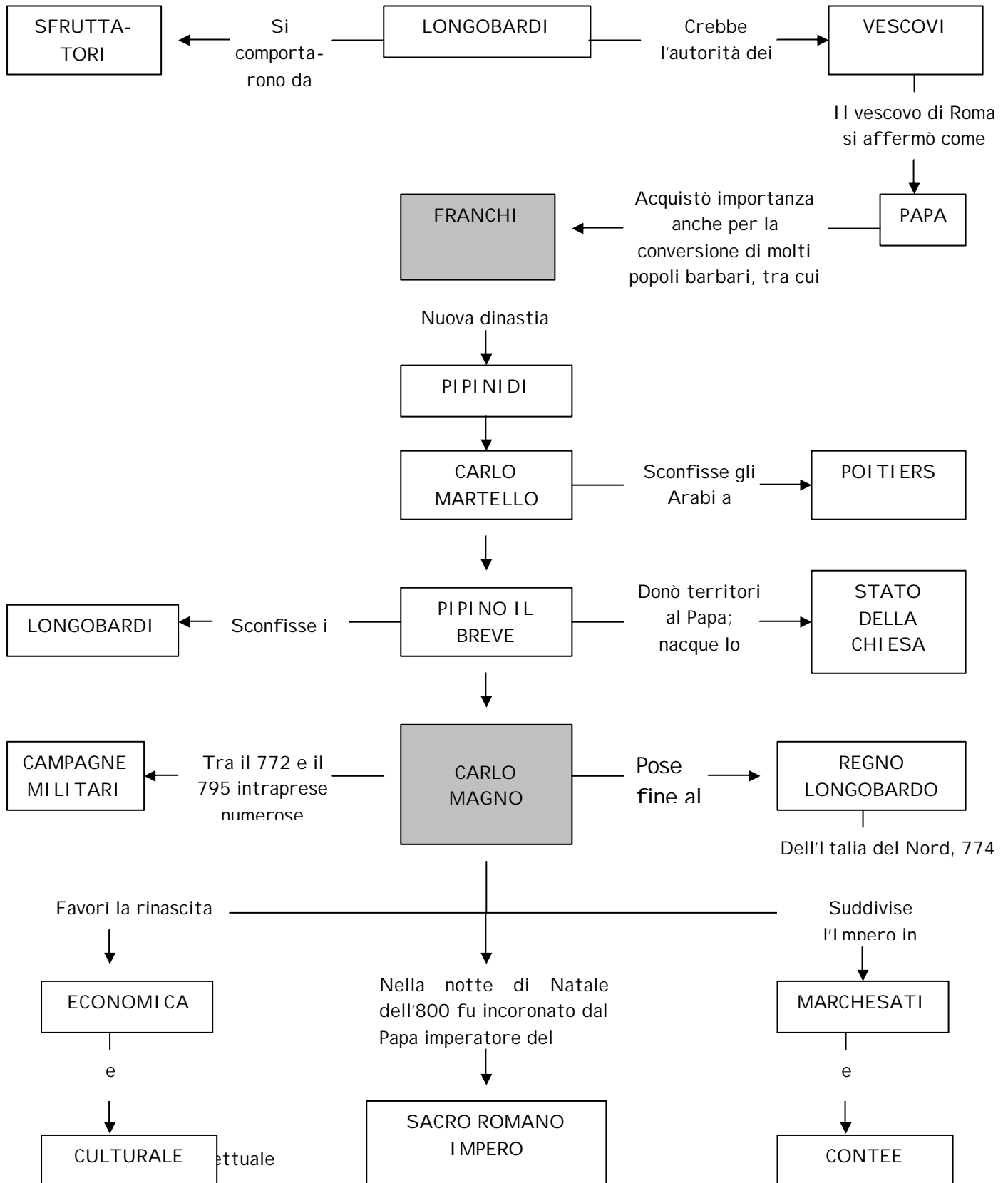
## MODULO V - LA CADUTA DELL'IMPERO ROMANO FORMAZIONE DEI REGNI ROMANO BARBARICI IL MONACHESIMO





## MODULO VI - IL MEDIOEVO

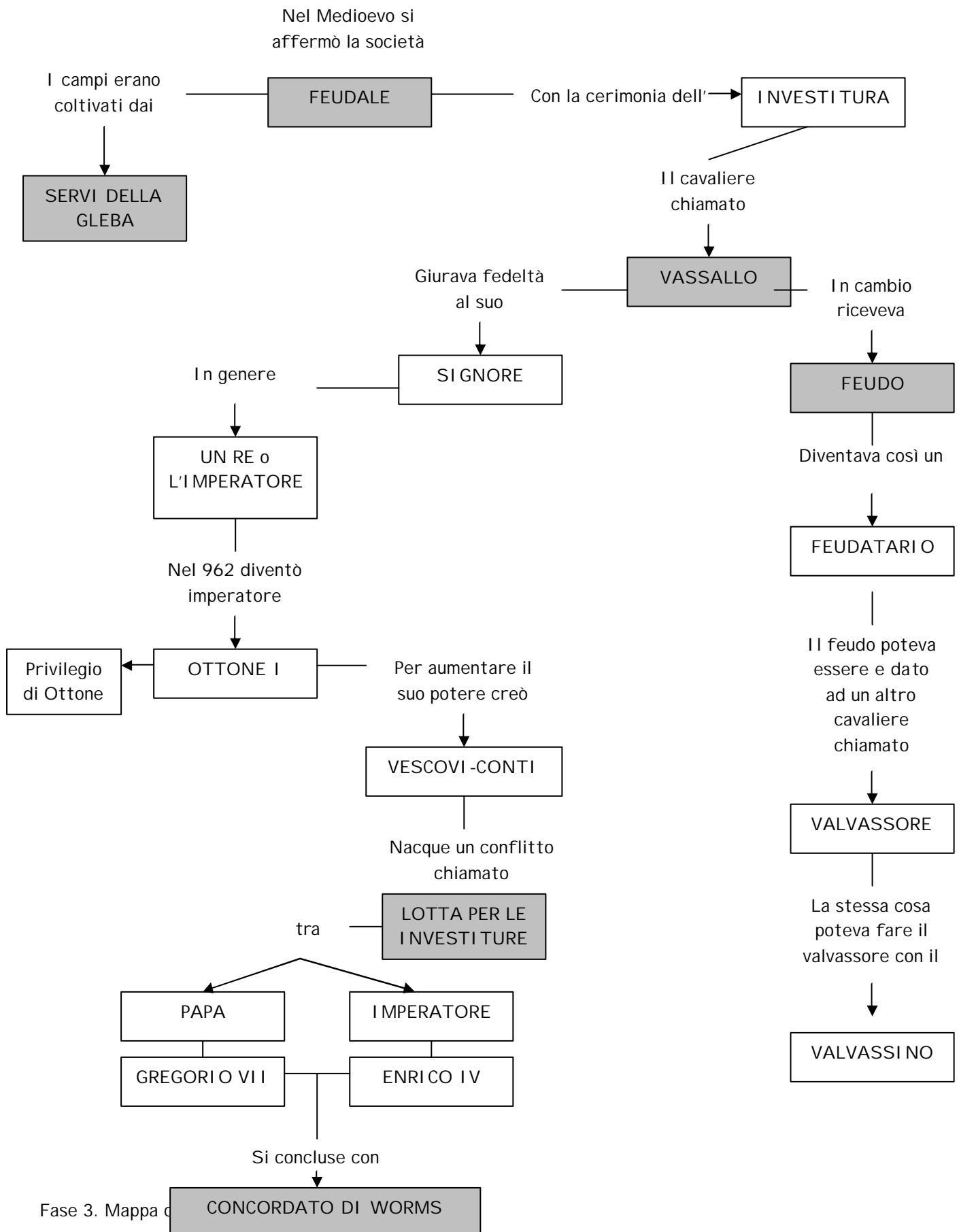
### 1. CARLO MAGNO E IL SACRO ROMANO IMPERO





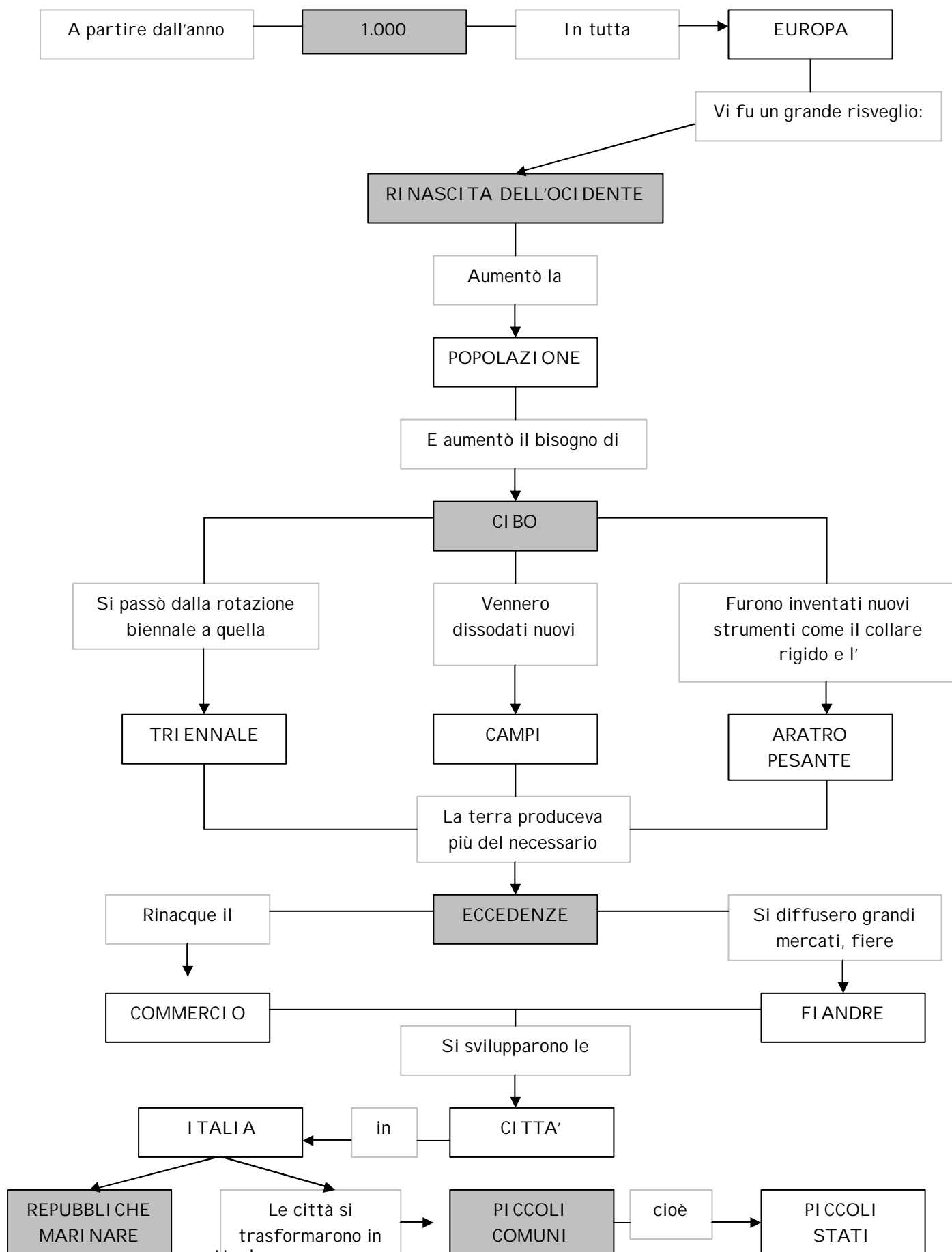


## 2. LA SOCIETA' FEUDALE



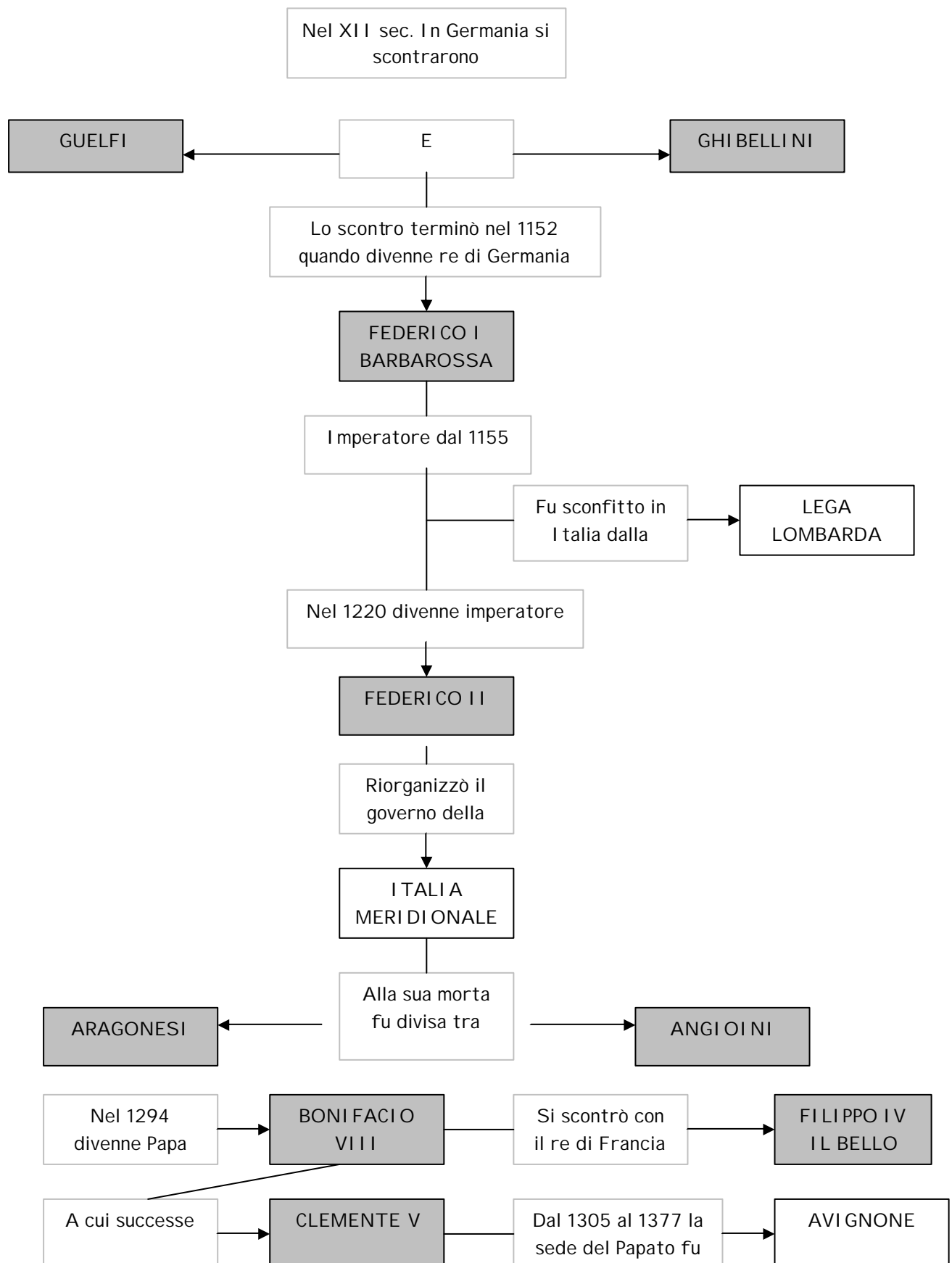


### 3. L'EUROPA DOPO IL 1.000 E I COMUNI ITALIANI





#### 4. IL LUNGO TRAMONTO DEL MEDIOEVO



Fase 3. Mappa concettuale